

**(Mouse) Bmi1 Antibody (Center)**  
**Purified Rabbit Polyclonal Antibody (Pab)**  
**Catalog # AP21471c**

## Specification

---

### **(Mouse) Bmi1 Antibody (Center) - Product Information**

Application	WB,E
Primary Accession	<a href="#">P25916</a>
Reactivity	Mouse
Host	Rabbit
Clonality	polyclonal
Isotype	Rabbit IgG

### **(Mouse) Bmi1 Antibody (Center) - Additional Information**

**Gene ID** 12151

#### **Other Names**

Polycomb complex protein BMI-1, Polycomb group RING finger protein 4, Bmi1, Bmi-1, Pcgf4

#### **Target/Specificity**

This Mouse Bmi1 antibody is generated from a rabbit immunized with a KLH conjugated synthetic peptide between 109-143 amino acids from the Central region of Mouse Bmi1.

#### **Dilution**

WB~~1:2000

E~~Use at an assay dependent concentration.

#### **Format**

Purified polyclonal antibody supplied in PBS with 0.09% (W/V) sodium azide. This antibody is purified through a protein A column, followed by peptide affinity purification.

#### **Storage**

Maintain refrigerated at 2-8°C for up to 2 weeks. For long term storage store at -20°C in small aliquots to prevent freeze-thaw cycles.

#### **Precautions**

(Mouse) Bmi1 Antibody (Center) is for research use only and not for use in diagnostic or therapeutic procedures.

### **(Mouse) Bmi1 Antibody (Center) - Protein Information**

**Name** Bmi1

**Synonyms** Bmi-1, Pcgf4

**Function** Component of a Polycomb group (PcG) multiprotein PRC1-like complex, a complex class required to maintain the transcriptionally repressive state of many genes, including Hox genes,

throughout development. PcG PRC1 complex acts via chromatin remodeling and modification of histones; it mediates monoubiquitination of histone H2A 'Lys-119', rendering chromatin heritably changed in its expressibility. The complex composed of RNF2, UB2D3 and BMI1 binds nucleosomes, and has activity only with nucleosomal histone H2A. In the PRC1-like complex, regulates the E3 ubiquitin-protein ligase activity of RNF2/RING2 (By similarity).

**Cellular Location**

Nucleus {ECO:0000250|UniProtKB:P35226}. Cytoplasm {ECO:0000250|UniProtKB:P35226}

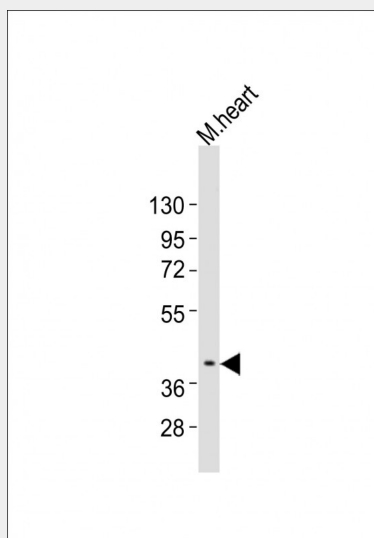
**Tissue Location**

Detected in most organs with high expression levels in thymus, heart, brain and testis

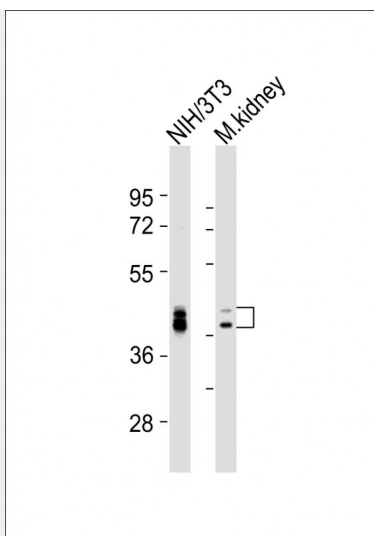
**(Mouse) Bmi1 Antibody (Center) - Protocols**

Provided below are standard protocols that you may find useful for product applications.

- [Western Blot](#)
- [Blocking Peptides](#)
- [Dot Blot](#)
- [Immunohistochemistry](#)
- [Immunofluorescence](#)
- [Immunoprecipitation](#)
- [Flow Cytometry](#)
- [Cell Culture](#)

**(Mouse) Bmi1 Antibody (Center) - Images**

Anti-Bmi1 Antibody (Center) at 1:2000 dilution + mouse heart lysates Lysates/proteins at 20 µg per lane. Secondary Goat Anti-Rabbit IgG, (H+L), Peroxidase conjugated at 1/10000 dilution Predicted band size : 37 kDa Blocking/Dilution buffer: 5% NFDM/TBST.



All lanes : Anti-Bmi1 Antibody (Center) at 1:2000 dilution Lane 1: NIH/3T3 whole cell lysates Lane 2: mouse kidney lysates Lysates/proteins at 20 µg per lane. Secondary Goat Anti-Rabbit IgG, (H+L), Peroxidase conjugated at 1/10000 dilution Predicted band size : 37 kDa Blocking/Dilution buffer: 5% NFDM/TBST.

#### **(Mouse) Bmi1 Antibody (Center) - Background**

Component of a Polycomb group (PcG) multiprotein PRC1- like complex, a complex class required to maintain the transcriptionally repressive state of many genes, including Hox genes, throughout development. PcG PRC1 complex acts via chromatin remodeling and modification of histones; it mediates monoubiquitination of histone H2A 'Lys-119', rendering chromatin heritably changed in its expressibility. In the PRC1 complex, it is required to stimulate the E3 ubiquitin-protein ligase activity of RNF2/RING2 (By similarity).

#### **(Mouse) Bmi1 Antibody (Center) - References**

Haupt Y.,et al.Cell 65:753-763(1991).  
van Lohuizen M.,et al.Cell 65:737-752(1991).  
Cao R.,et al.Mol. Cell 20:845-854(2005).  
Buchwald G.,et al.EMBO J. 25:2465-2474(2006).